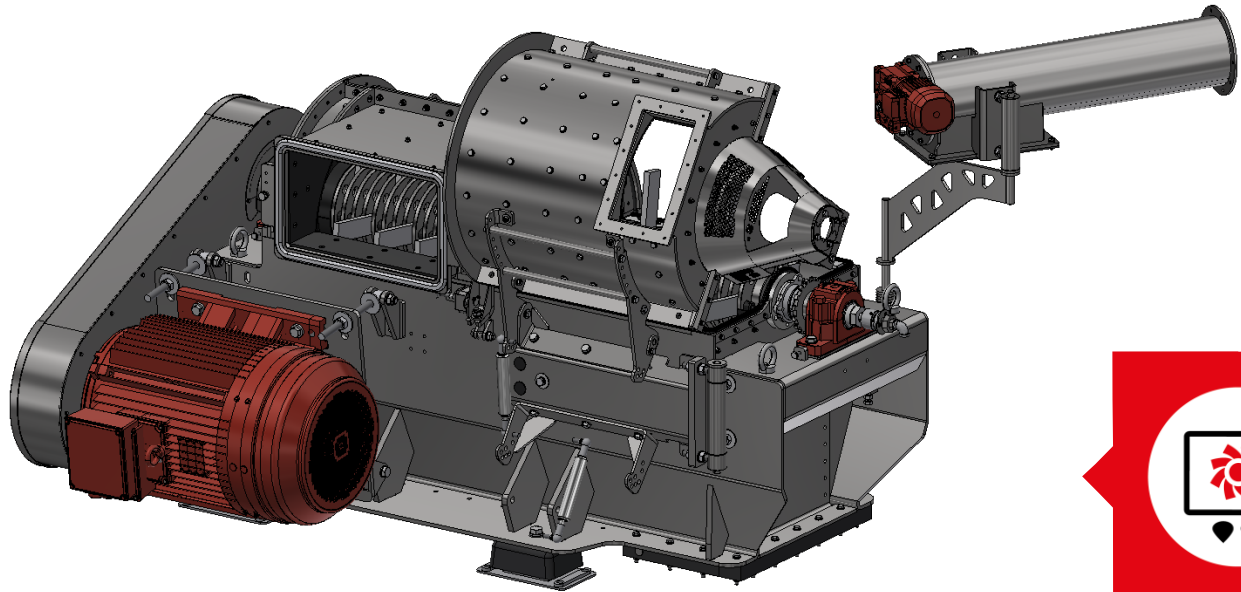


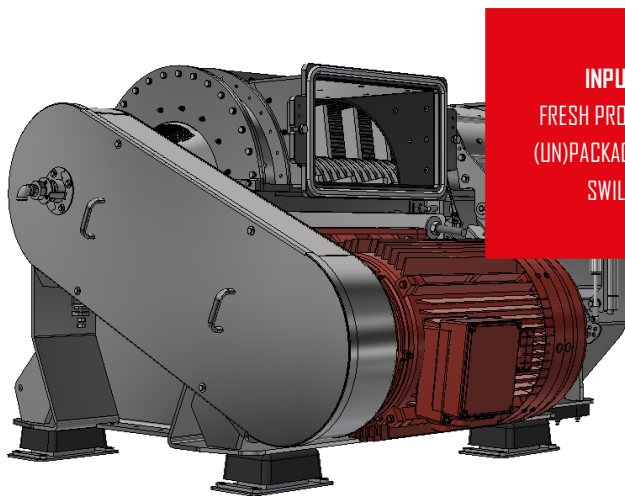
GRINDING



SMIM050

The SMIM050 is the perfect solution for processing a variety of streams and products in various amounts. The SMIM050 is engineered and designed to combine the tasks of grinding and depackaging in one integrated machine design. The SMIM050 has a completely openable body, ensuring a easily reachable working environment for the mechanic. Cleaning, components swapping (for customer and product specific settings) and performing predictive maintenance can be done in a safe, fast and cost effective way.

- ▶ Available with multiple hammer and filter types ▶ Standard version is entirely stainless steel
- ▶ Can do both grinding and depackaging of product streams ▶ Modular design for handling many types of product
- ▶ Optionally, liquid can be added to the product via the main axle



INPUT
FRESH PRODUCTS,
(UN)PACKAGED AND
SWILL



OUTPUT
PACKAGING, ORGANIC
SLURRY AND GRINDED
PRODUCT



smicon
ENGINEERING YOUR PROCESS

SMIM050

TECHNICAL DATA

Dimensions

Machine general	2715x1915x1275 mm (LxWxH)
Infeed	560x306 mm (LxW)
Outfeed organic	370x537 mm (LxW)
Outfeed plastic	370x537 mm (LxW)
Transport dimensions	3215x2415x1775 mm (LxWxH)
Transport volume	13.78 m ³
Clearance area	5315x4915x2275 mm (LxWxH)
Filter surface	1.68 m ²
Filter mesh size	Ø 12/15/20/25 mm

Weight

Weight	3000 kg
Floor load per support	10.2 kN
Transport weight	3500 kg

Drive

Power	18 / 22 / 37 / 45 / 55 / 75 / 90 kW
IP rating	IP56

Liquid feed

Connection	1" BSP
Temperature	1-70 °C
Maximum pressure	5 bar
Maximum capacity	18 m ³ /hour
Maximum fouling	Ø 2 mm

Product information

Capacity grinding	1-100 m ³ /hour
Capacity depacking (Approx.)	6 m ³ /hour
Product temperature	1-70 °C

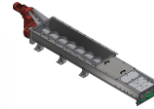
Other specifications

A-weighted sound pressure level	<80 dB
C-weighted instantaneous sound pressure	<130 dB

Technical data is specified according to the machine without accessories

Accessories

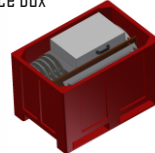
Infeed screw



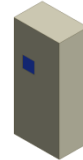
Frame



Service box



Control



Clearance area and illustrations

